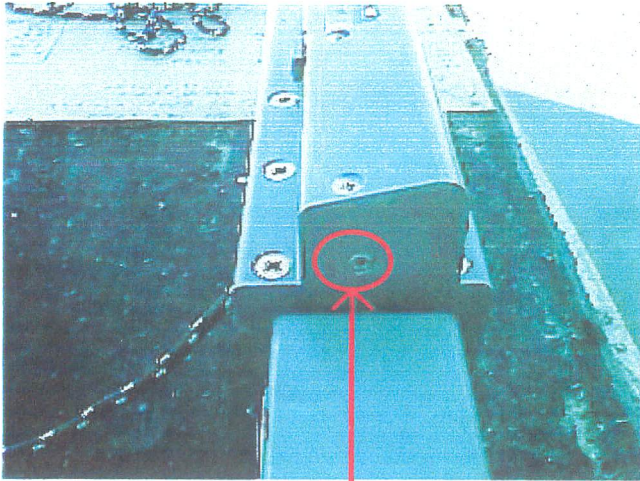


C-470 TRAVELER LINE UPGRADE INSTRUCTION MANUAL

*note! "car" has ball bearings -
do not remove without placing
a tray underneath or turn
it upside down first*

STEP #1

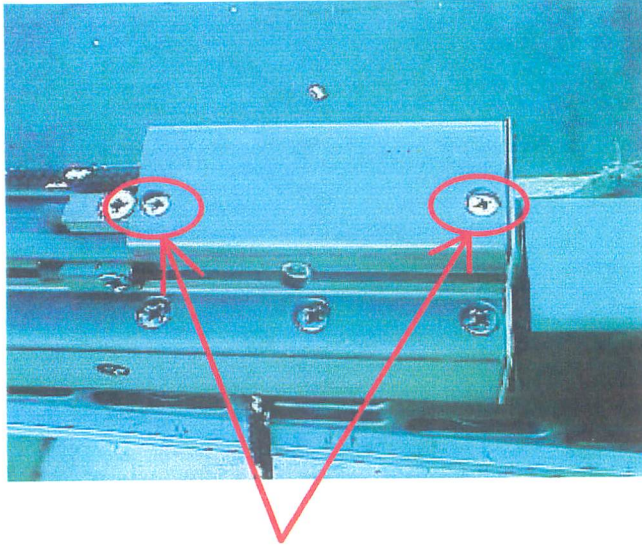
STARBOARD SIDE



REMOVE THIS SCREW

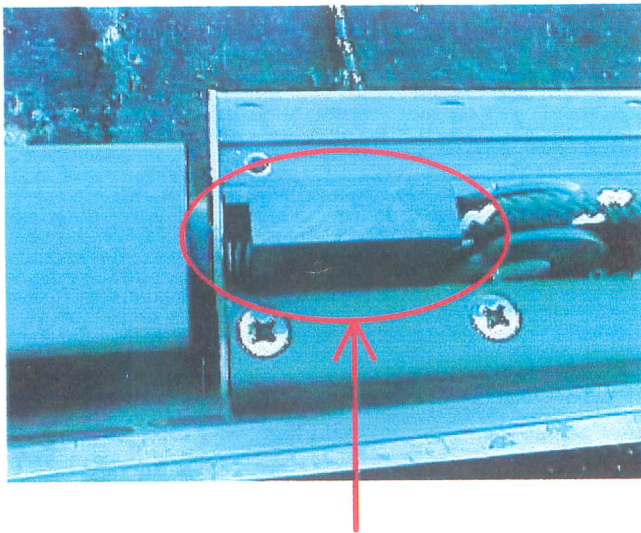
STEP #2

PORT & STARBOARD SIDES



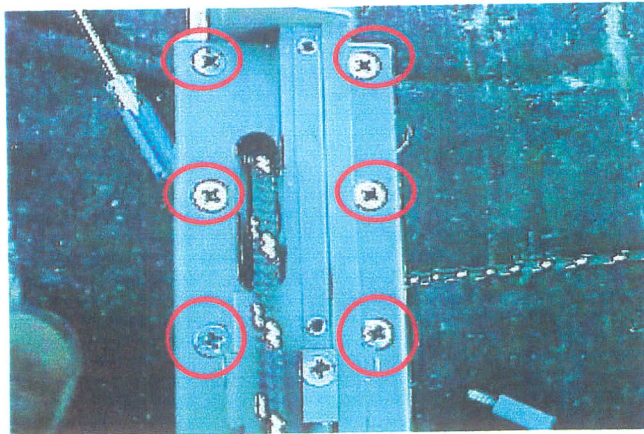
REMOVE THESE SCREWS
AND REMOVE TOP COVERS

STEP #3



REMOVE BOTH BLOCKS & SPRINGS

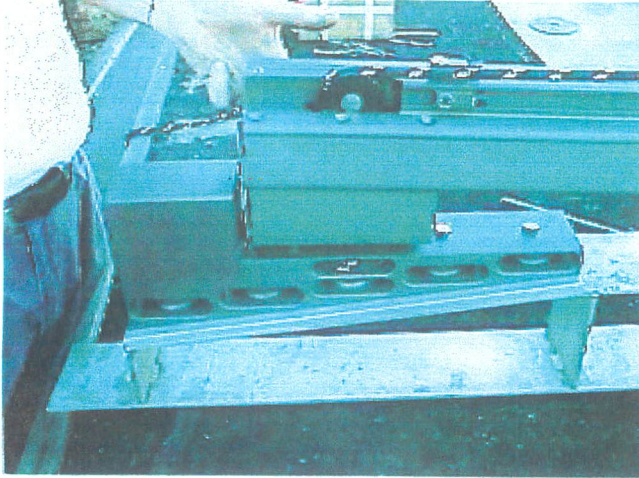
STEP #4
STARBOARD SIDE



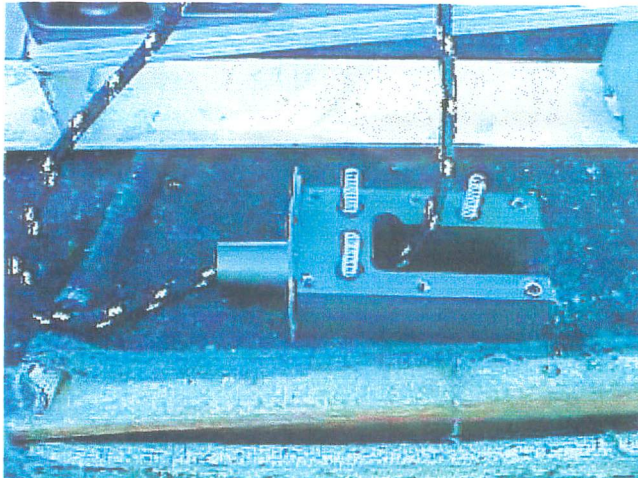
REMOVE THESE SCREWS

STEP #5

STARBOARD SIDE

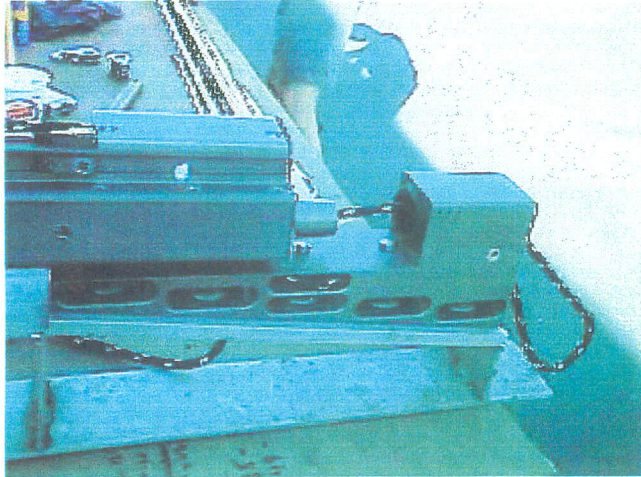


LIFT THE TRAVELER OFF THE INSIDE BLOCK AND REMOVE THE BLOCK



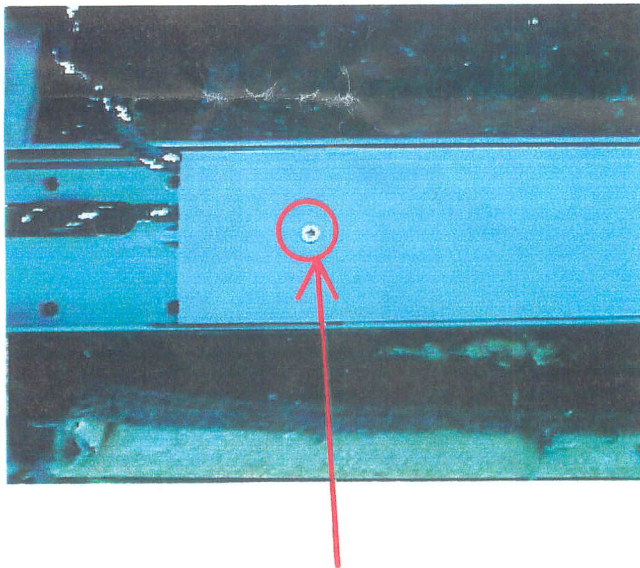
SET THE BLOCK ASIDE

STEP #6
PORT SIDE



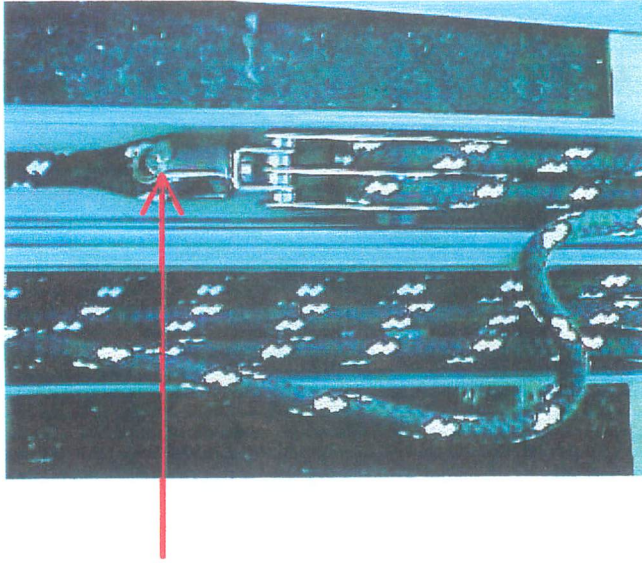
PULL TRAVELER TOWARDS STARBOARD SIDE DISENGAGING PORT SHANK

STEP #7

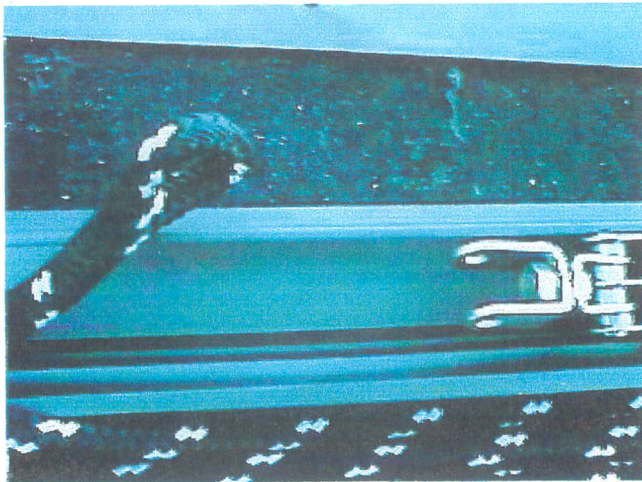


FLIP THE TRAVELER OVER REMOVE 3 #10 SCREWS & BOTTOM COVER

STEP #8

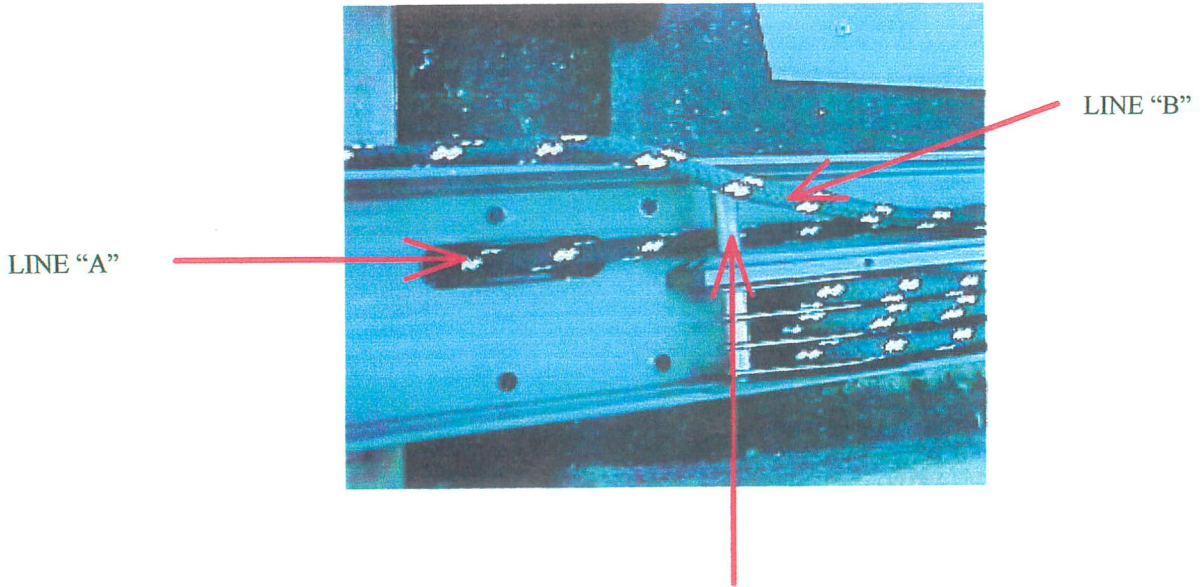


REMOVE RING & CLEVIS PIN FROM LINE "A"

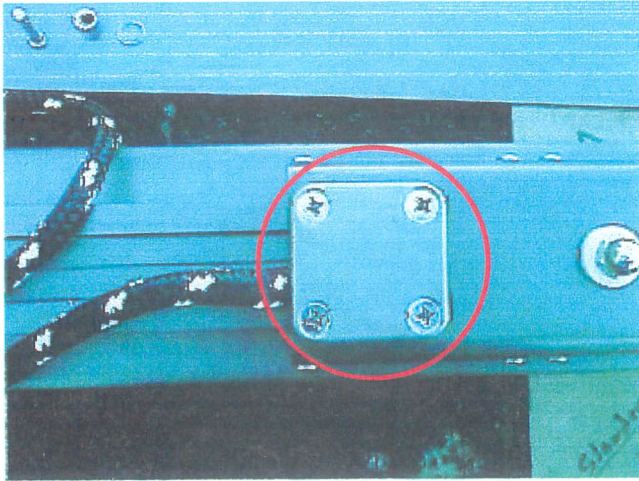


PULL OLD LINE OUT AND ATTACH NEW LINE

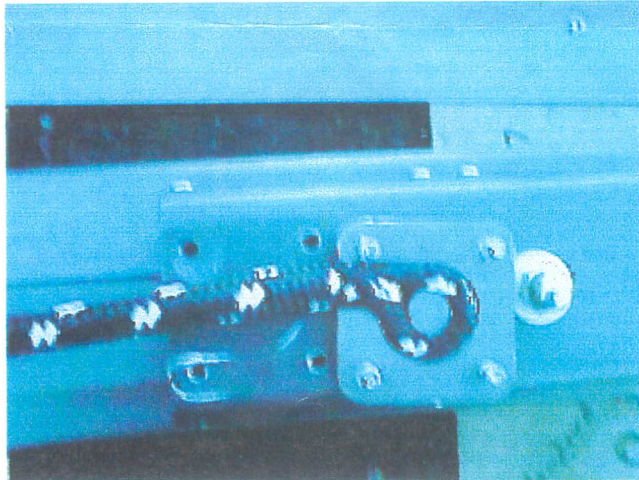
YOU ARE REPLACING LINE "A" ON BOTH PORT & STARBOARD SIDES.
WE RECOMMEND REPLACING ONE SIDE AT A TIME SO YOU CAN
REFER TO THE OTHER SIDE IF YOU GET CONFUSED.



LINE "A" GOES UNDER THE SEPARATOR BUSHING
LINE "B" GOES OVER IT



REMOVE EXISTING COVER



INSTALL UPGRADED COVER & DOUBLE SPLICED LINE
(SUPPLIED BY GARHAUER)

REASSEMBLE TRAVELER BY WORKING YOUR WAY
BACKWARDS THROUGH THE INSTUCTIONS.